

National Market Practice Group PL (NMPG PL)

CA NMPG PL

POLAND

CORPORATE ACTIONS

ISO 15022

Communication between local custodians and their clients

ISSUED ON BEHALF POLISH MARKET PRACTICE GROUP
STANDARDS RELEASE 2007

Status:

Final v.1

Author:

CA NMPG PL

INTRODUCTION	3
I. CORPORATE EVENTS – BACKGROUND INFORMATION	4
A. TYPES OF CORPORATE EVENTS	4
B. FORMS OF DELIVERING ENTITLEMENTS BY THE ISSUER.....	4
C. EXCHANGE OF INFORMATION	4
1. <i>Mandatory Events</i>	5
2. <i>Mandatory Events with Options and Voluntary Events</i>	5
3. <i>Types of information</i>	5
II. CORPORATE EVENTS ON THE POLISH MARKET.....	7
A. TYPES OF MESSAGES	7
1. <i>MT 564 – Announcement & (Final) Entitlement (Notification Message)</i>	7
a) Filling-out instructions for certain fields of a message.....	8
2. <i>MT 566 – Confirmation (Confirmation Message)</i>	10
a) Filling-out instructions for certain fields of a message.....	10
3. <i>Narrative fields in messages</i>	11
III. PAYMENT OF OBLIGATORY CASH ENTITLEMENTS	11
A. EXCHANGE OF INFORMATION.....	11
B. DIVIDEND PAYMENT	12
1. <i>MT564 - Announcement</i>	12
2. <i>MT564 - Entitlement</i>	14
3. <i>MT 566 - Confirmation</i>	16
C. INTEREST PAYMENT.....	18
1. <i>MT 564 – Announcement</i>	18
2. <i>MT564 - Entitlement</i>	19
3. <i>MT 566 - Confirmation</i>	21
D. REDEMPTION OF BONDS AT MATURITY	23
1. <i>MT 564 - Announcement</i>	23
2. <i>MT564 - Entitlement</i>	25
3. <i>MT 566 - Confirmation</i>	27

Introduction

This study outlines the principles governing the processing of corporate events on the Polish capital market, and has been developed as part of the works of CA PL NMPG (Polish National Market Practice Group – CA) comprising representatives of institutions active on that market. The aim of the Group's effort was to implement the ISO 15022 standard on the Polish market.

The Group was joined by representatives of the following institutions:

Institution:

CitiHandlowy S.A.	Iwona Barc
Bank Polska Kasa Opieki S.A.	Aneta Kumor
Deutsche Bank Polska S.A.,	Konrad Grójec
	Bogumił Kloc
ING Bank Śląski S.A.,	Beata Czaicka
	Jacek Motyka
	Katarzyna Olak
The National Depository for Securities (KDPW S.A.)	Jolanta Kociałkowska

The aim of this study was to establish a common standard for the processing of corporate events in institutions active on the Polish market, and for corporate events relating to securities issued under the Polish law. At the current stage of the study, the standards developed by CA PL NMPG relate only to messages exchanged between participants of the depository-settlement system and their clients.

The study provides an overview of the general market practice, which does not prevent participants from providing other and additional information, based on individualised agreements with the clients. It should be noted, however, that all participants of the capital market should be able to correctly read a message comprising information specified in the standard, and generate a message in accordance with the standard.

The Group have agreed that the study should include the market practice based on sending complete messages, carrying full information relating to a confirmed corporate event.

The study comprises only the description of messages and their structure conforming to the ISO15022 standard and the SR2007.

Please use the following address to submit your feedback and opinion on the study:
<plmpg@kdpw.pl>

I. Corporate events – background information

A. Types of corporate events

From the Group's perspective, classification of corporate events into general categories is of considerable importance. The Securities Market Practice Group (SMPG) has classified corporate events into the following 3 types:

1. **Mandatory** – events where the shareholder is not provided with any selection option, e.g.:
 - payment of dividend,
 - payment of interest,
 - mandatory redemption
 - stock split,
 - assimilation/conversion

2. **Mandatory with Options** – events defined as those events where, if the shareholder does not take any form of action allowed in the exercise of a given entitlement, an event defined by the Issuer occurs, which results in changing the quality of rights from securities, or in the payment of cash. Remarkably, the holder of securities has the option to elect the manner in which his rights are exercised, e.g. various options of exercising rights to dividend – cash payment or allocation of new shares or rights to new shares in exchange for dividend. This event type may be divided into two categories:
 - a. with default option and additional options – in absence of the investor's decision, the default option is exercised, e.g.
 - dividend payment with options,
 - b. with options of equal priority – the investor's decision is necessary, e.g.
 - conversion with options

3. **Voluntary** – events where the shareholder has an option to elect if and when his rights should be exercised, e.g.
 - exercise of pre-emptive right,
 - tender offer,
 - General Shareholders Meeting.

B. Forms of delivering entitlements by the issuer

Certain corporate events result, e.g. in connection with the performance of resolutions adopted by the General Shareholders Meeting, in an obligation on the part of the issuer to deliver certain entitlements to the owner (holder) of securities or proprietary interest. Entitlements carried by securities may be delivered by the issuer in the following manner:

1. entitlements paid in cash only – this group includes, inter alia, payment of interest on bonds, dividend,
2. entitlements that take the form of securities – this group include, inter alia, exercising of subscription rights, dividend in the form of shares.
3. entitlements paid partially in securities, and partially in cash.

C. Exchange of information

Depending on the type of events giving rise to entitlements in securities, messages may include information, requests for confirmation, etc. The reason for that is the diversity in the manner in which rights vested in securities holders are exercised.

Note: the term "account" refers also to securities accounts.

1. Mandatory Events

The chart below shows the exchange of information relating to Mandatory Events.

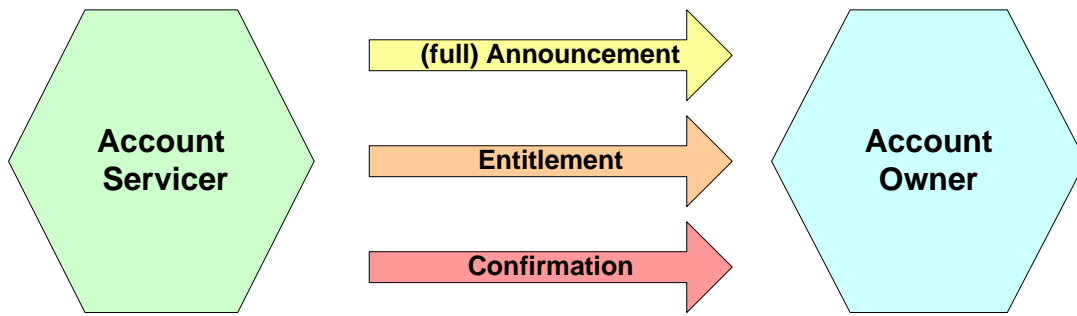
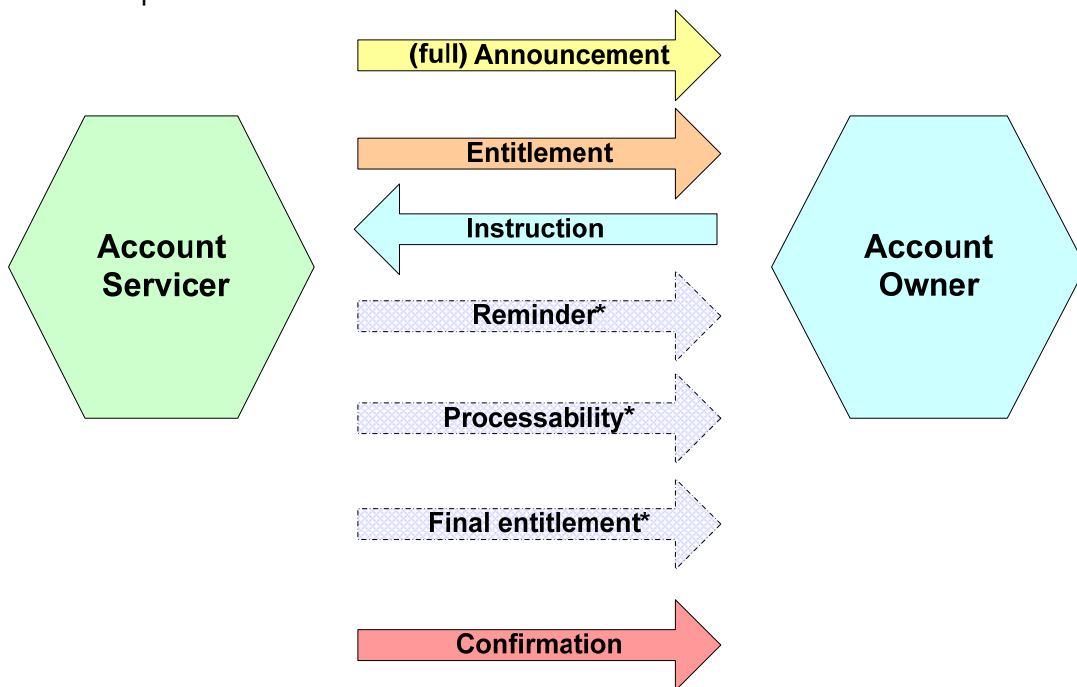


Chart 1. Mandatory Events

In certain cases, notification is not provided before the day the entitlements in securities arise is determined.

2. Mandatory Events with Options and Voluntary Events

For Mandatory Events with Options and Voluntary Events, additional exchange of information is required between the account servicer and the account holder.



* – optional exchange of information

Chart 2. Mandatory Events with Options and Voluntary Events

In this case, the Announcement states the alternative methods of exercising the entitlements, available to the securities holder. According to the Service Level Agreement (SLA), the sending of the following types of information: Reminder, Confirmation of Instruction Receipt and Final Entitlement, is optional.

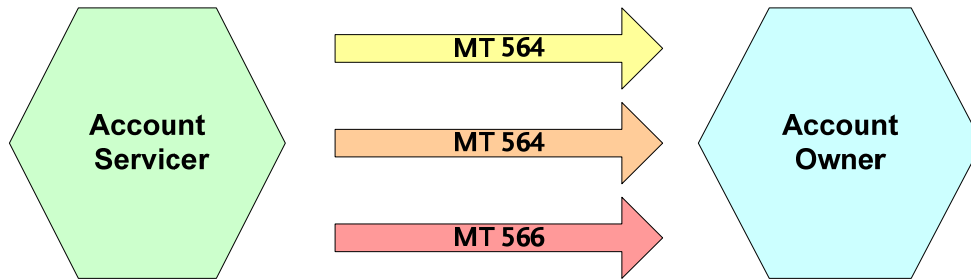
3. Types of information

Specific information types correspond to the following SWIFT messages:

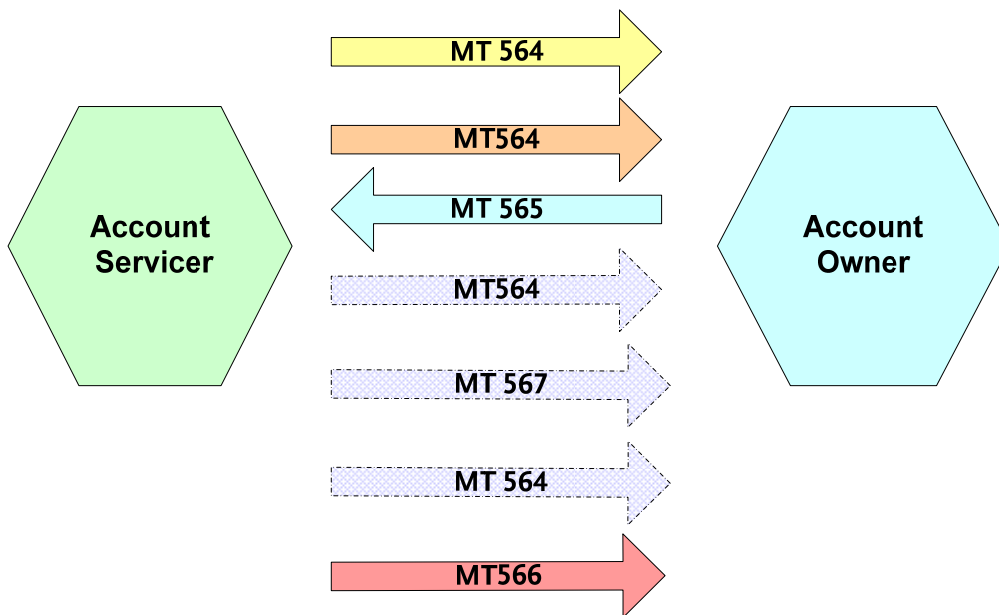
- Announcement & (Final) Entitlement – **MT564**,
- Reminder – **MT564**,
- Instruction – **MT565**,
- Confirmation – **MT566**,
- Corporate Action Status and Processing Advice – **MT567**.
- Corporate Action Narrative – **MT568**

According to the classification of events into 3 categories and the above charts, the process of sending messages may be illustrated as follows:

- for Mandatory Events:



- for Mandatory Events with Options and Voluntary Events:



II. Corporate events on the Polish market

As part of the first stage of developing the practices for sending in the Polish market of messages conforming to the ISO 15022 standard, the Polish Working Group prepared a study covering only those events which relate to the payment of cash entitlements:

- dividend payment,
- interest payment,
- redemption of bonds at maturity.

As work progresses on other event types, this study will be updated.

A. *Types of messages*

1. MT 564 – Announcement & (Final) Entitlement (Notification Message)

MT564 message performs two functions:

- Announcement (incomplete, change, complete, reminder),
- Entitlement, notifying of entitlements carried by securities held by the investor, and comprises the following general components:

- Announcement Type – mandatory
- Announcement Status – mandatory,
- Event Category – mandatory,
- Event Type – mandatory,
- Reference: Senders Reference – mandatory; unique corporate action reference - mandatory,
- ISIN,
- Account,
- Balance – optional,
- Event details.

An “Entitlement Notification” message comprises the same components as “Announcement” message, followed by securities balance information and entitlements amounts, e.g. net and gross dividend amount, tax amounts.

When the record date and the payment date are consecutive, the “Announcement” message may be omitted. This also applies if the event is a well-known event, e.g. payment of interest, and if the “Announcement” is sent after the date of payment of the entitlement – in order to retain STP, the entity is obliged to send the “Entitlement ” message (NEWM) before sending the “Confirmation” message. Messaging guidelines are shown in Table 1.

In interpreting of the Table below, please note principle of combining fields: **23G: Function of the Message** and **25D: Status Code: Processing Status**¹

¹ Section 3.2.4 in “Corporate Actions Global Document – April 2007”

Table 1

Corporate Event	Well-Known	First information sent after record date and before payment date.	First information sent after record date and after payment date.
564 Notification with NEWM function	Mandatory	Mandatory If information on entitlements is provided – in Status Code field 25D::PROC//ENTL	Mandatory If information on entitlements is provided – in Status Code field 25D::PROC//ENTL
564 Notification with entitlements with REPE function	Optional If Notification with NEWM function included information on entitlements	Optional If Notification with NEWM function included information on entitlements	Optional If Notification with NEWM function included information on entitlements
566 Confirmation	Mandatory	Mandatory	Mandatory

a) Filling-out instructions for certain fields of a message.

The Group has established the following instructions for the filling out of specific blocks and fields in a message:

1. 20C field: Corporate Action Reference

Qualifier	Rule
CORP	Where the same corporate event is executed for several ISIN codes of a given issuer, each ISIN code is assigned a different Corporate Action Reference.

Corporate Action Reference (CORP) is a reference number of a corporate event. All messages relating to that event should state the same event reference number.

2. 23G field: Function of the Message

Qualifier	Rule
NEWM	Applied to each first message notifying of a given event (also applies to Entitlement Notification).
REPL	Applied to each successive message notifying of a given event, also if the message includes information on entitlements acquired by the client.
RMDR	Applied to sending reminders.
REPE	Applied to the first Entitlement Notification, provided that an Event Notification, which did not include any entitlement information, was sent earlier.
WITH	Applied if an event is withheld by the issuer.
CANC	Used if a message sent previously by the sender is cancelled.

Sequence of sending MT564 messages as part of the execution of one corporate event²:

- first information on the corporate event – 23G:NEWM,
- message modification prior to record date – 23G:REPL,
- entitlement information for Mandatory Events – 23G:REPE,
- any modification to entitlements or events – 23G:REPE.

The block with information on references to previous messages must be filled in for all messages sent after a message with 23G:NEWM.

Late event notification

- Where an MT564 message with 23G:NEWM is sent after the record date with entitlement information, the re-sending of message with 23G:REPE is not necessary.
- Where event information is provided to the client after the payment has been made, it is recommended to send MT564 before sending an MT566 confirmation in order to keep processing automated.

3. 25D field: Status Code: Processing Status

Qualifier	Rule
PROC//ENTL	ENTL code for a message with entitlements is applied only if NEWM qualifier is included in field 23G: Function of the Message. Blocks E1 and E2 should be filled out.
PROC//COMP	COMP code denotes that the message includes all relevant information

4. 20C field: Reference

Market practice requires only a link to the previously sent message – 20C::PREV

5. 97A field: Account

Qualifier	Rule
:SAFE//GENR	Where a client owns more than one account, a single message may be sent for all accounts. No entitlement information in the message.

MT 564 message with entitlements is sent for each account of the client. MT 566 Confirmation message is sent for each account of the client.

6. 94F field: Place

If “Place of safekeeping” field is used, the following rules apply:

- For different places of safekeeping but the same event details – 1 message
- For different event details (due to different places of safekeeping) – 1 message per each place of safekeeping.

7. 93B field: Balance

² ”SMPG Corporate Actions Global Document (April 2007)”, p. 8

The Group have agreed that if ELIG quantifier is applied, balance should be calculated as follows:

Eligible Balance = settled positions +/- all types of transactions affecting the final balance of entitlements for the client.

If settled positions are reported – balance on the client's account, SETT quantifier should be used.

8. 98A field: Date

Qualifier	Rule
XDTE	in the case of securities listed on regulated markets in Poland, ex-date is based on the settlement cycle of guaranteed transactions.
ANOU	date of announcement is a date defined by the Issuer.
RDTE	record date according to positions settled in securities accounts

Redemption date is identical to payment date.

9. 17B field: Flag

Qualifier	Rule
DFLT	For Mandatory Events, at least once the code value is Y.

2. MT 566 – Confirmation (Confirmation Message)

The message is mandatory for corporate events relating to entitlements resulting in the payment of cash and/or securities.

MT566 message comprises the following general components:

- Event Category – mandatory,
- Event Type – mandatory,
- Reference: Senders Reference – mandatory; unique corporate action reference - mandatory,
- ISIN,
- Account,
- Balance,
- Event details,
- Amounts.

Link to MT564 and MT565 messages, which preceded the MT566 message, is optional yet recommended.

a) Filling-out instructions for certain fields of a message.

1. 23G field: Function of the Message

Field	Qualifier	Rule
Function of the Message	NEWM	applied for each first confirmation of payment, account debiting/crediting.
Function of the Message	REVR	applied if a previously sent confirmation is modified.

2. Use of “Value date”

It is recommended that “Value date” is obligatorily specified in the message, even if it is identical to “Payment date”.

3. Use of “Gross Amount ”

Where “gross amount (GRSS)” is equal to “posting amount (PSTA)”, then “gross amount” may be applied optionally.

3. Narrative fields in messages

While narrative fields (70a) prevent a fully automated messaging, they should be used only if certain event information may not be included in non-narrative fields. The Group have agreed that narrative fields will be used according to needs.

The Group's recommendation is that narrative fields should be used according to the guidelines included in *SMPG Corporate Actions Global Document (April 2007)*.

III. Payment of obligatory cash entitlements

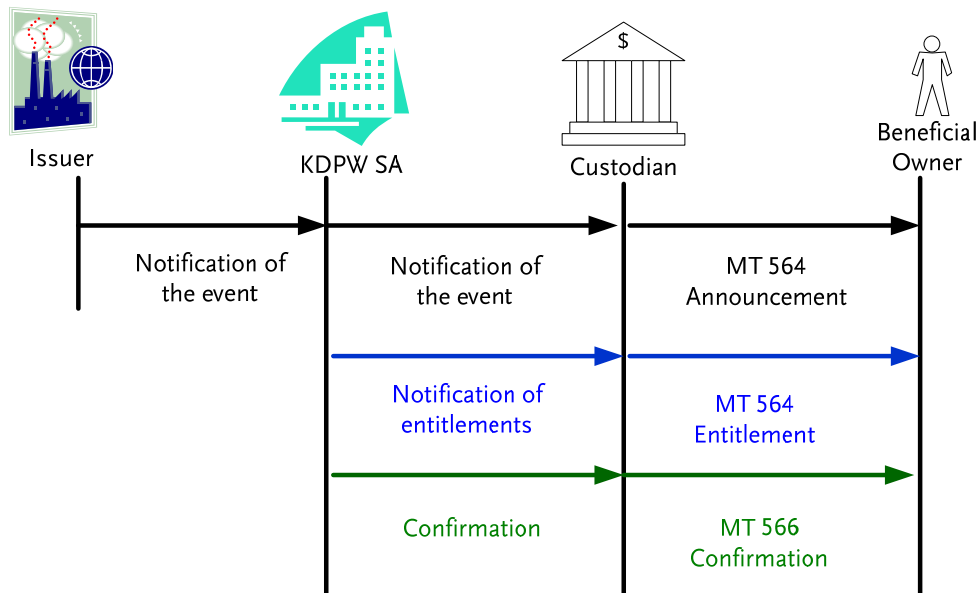
Events relating to the payment of mandatory cash entitlements are defined as those events where the owner of securities which carry such entitlements has neither an option to elect the form of the entitlement, nor is entitled to waive the entitlement, and the distribution of those entitlements takes place over a specific period of time; such events include:

- cash dividend payment,
- interest payment,
- mandatory redemption.

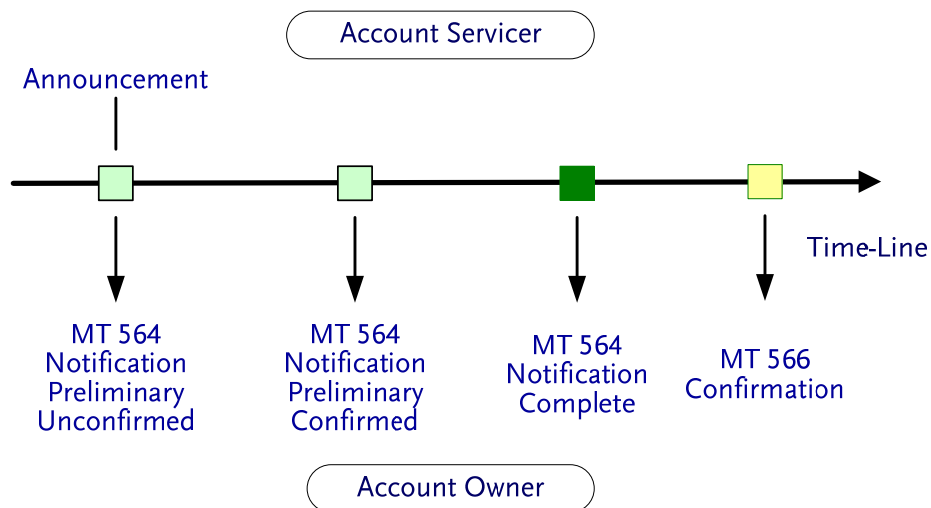
A. Exchange of information

The Group have decided that:

1. Preliminary announcement (25D::PROC//PREC) is optional – an incomplete message can be sent where all event-related information is not available or not confirmed,
2. Full announcement (25D::PROC//COMP) is mandatory – a complete message on the event should be sent as soon as event-related information has been obtained. A complete message should comprise all components required for a given event, as specified in this document.
3. Entitlement message is mandatory – it should be sent within 24 hours of record date,
4. Confirmation is mandatory – agreement concluded with the client specifies the time of sending the message. In the case of partial entitlement delivery, sending a message is required following each operation.



Scheme 5: Message flows



Scheme 6: Cash events – Time-Line

B. Dividend payment

Dividend payment rules:

1. Dividend payment notification should be sent to the account holder at the latest 5 days before the record date, if such information is available to the servicer.
2. Where dividend is payable in instalments, each instalment is always identified by a unique corporate event code.
3. In the case of complete messages, all fields specified by the Group as mandatory must be filled out.

1. MT564 - Announcement

Cash Dividend	
MT 564 Notification – complete	

Nr	TAG	Qualifier(s) Supported	Tag Status	Generic Field Name	Detailed Field Name	Content / Options	Explanation / Comments	Example
			NMP G PL					
Mandatory Sequence A General Information								
1	16R	GENL	M		Start of Block	GENL		GENL
	20C	CORP	M	Reference	Corporate Action Reference	:4!c//16x		:CORP//12345
		SEME	M	Reference	Sender's Reference	:4!c//16x		:SEME//1234567
3	23G	NEWM	M		Function of the Message	:4!c		:NEWM
		CANC						
		REPL						
		WITH						
4	22F	CAEV	M	Indicator	CA Event Indicator	:4!c//4!c	DVCA	:CAEV//DVCA
		CAMV	M		Mandatory/Voluntary			:CAMV//MAND
5	98A 98C	PREP	O	Date/Time	Preparation Date	:4!c//8!n :4!c//8!n6!n		PREP//20051014 PREP//20051014191603
6	25D	PROC	M	Status Code	Processing Status	:4!c//4!c	COMP	:PROC//COMP
Repetitive Optional Subsequence A1 Linkages								
7	16R	LINK	M		Start of Block	LINK		LINK
9	13A	LINK	O	Number Identification	Linked Message	:4!c//3!c		:LINK//564
10	20C	PREV	M	Reference	Previous Reference	:4!c//16x		:PREV//123456
11	16S	LINK	M		End of Block	LINK		LINK
End of Subsequence A1 Linkages								
12	16S	GENL	M		End of Block	GENL		GENL
End of Sequence A General Information								
Mandatory Sequence B Underlying Securities								
13	16R	USECU	M		Start of Block	USECU		USECU
14	35B		M		Identification of Financial Instrument	[ISIN!e12!c] [4*35x]		ISIN PLBSK0000017 ING BSK
Repetitive Mandatory Subsequence B2 Account Information								
24	16R	ACCTINFO	M		Start of Block	ACCTINFO		ACCTINFO
26	97A 97C	SAFE	M	Account	Safekeeping Account	:4!c//35x :4!c//4!c	GENR	:SAFE//123456 :SAFE//GENR
27	94F	SAFE	O	Place	Place of Safekeeping	:4!c//4!c/4!a2!a2! c[3!c] (Qualifier) (Place) (BIC/BEI)	CUST ICSD NCSD SHHE	:SAFE//CUST/BANKPLP X
28	93B	ELIG SETT	O O	Balance	Total Eligible for CA Settlement Position	:4!c//4!c/[N]15d	UNIT	:ELIG//UNIT/20890,
29	16S	ACCTINFO	M		End of Block	ACCTINFO		ACCTINFO
End of Subsequence B2 Account Information								
30	16S	USECU	M		End of Block	USECU		USECU
End of Sequence B Underlying Securities								
Optional Sequence D Corporate Action Details								
41	16R	CADETL	M		Start of Block	CADETL		CADETL
42	98A	ANOU	O	Date/Time	Announcement Date	:4!c//8!n		:ANOU//20050930
		XDTE	O		Ex-Dividend or Distribution Date		:XDTE//20051012	
		RDTE	M		Record Date		:RDTE//20051014	
50	22F	DIVI	O	Indicator	Dividend Type	:4!c//4!c	FINL INTE REGR SPEC	

53	16S	CADETL	M		End of Block	CADETL		CADETL
End of Sequence D Corporate Action Details								
Repetitive Optional Sequence E Corporate Action Options								
54	16R	CAOPTN	M		Start of Block	CAOPTN		CAOPTN
55	13A	CAON	M	Number Identification	CA Option Number	:4!c//3!c		:CAON//001
56	22F	CAOP	M	Indicator	Corporate Action Option Code	:4!c//4!c	CASH	:CAOP//CASH
57	11A	OPTN	O	Currency	Currency Option	:4!c//3!a		:OPTN//PLN
58	17B	DFLT	M	Flag	Default Processing Flag	:4!c//1!a	DFLT	:DFLT//Y
60	98A	PAYD	M	Date/Time	Payment Date	:4!c//8!n		:PAYD//20051031
62	92F	GRSS	M	Rate	Gross Dividend Rate	:4!c//3!a15d (Qualifier) (Currency Code) (Amount)		:GRSS//PLN8,
	92A	TAXR	O		Withholding Tax Rate	:4!c//[N]15d (Qualifier) (Sign) (Rate)		:TAXR//15
		WITF	O		Withholding of Foreign Tax			
		WITL	O		Withholding of Local Tax			
94	16S	CAOPTN	M		End of Block	CAOPTN		CAOPTN
End of Sequence E Corporate Action Options								

2. MT564 - Entitlement

Cash Dividend								
MT 564 Notification of Entitlement								
Nr	TAG	Qualifier(s) Supported	Tag Status	Generic Field Name	Detailed Field Name	Content / Options	Explanation / Comments	Example
			NMP G PL					
Mandatory Sequence A General Information								
1	16R	GENL	M		Start of Block	GENL		GENL
	20C	CORP	M	Reference	Corporate Action Reference	:4!c//16x		:CORP//12345
		SEME	M	Reference	Sender's Reference	:4!c//16x		:SEME//1234568
3	23G	NEWM CANC REPL REPE WITH	M		Function of the Message	:4!c		:REPE
4	22F	CAEV	M	Indicator	CA Event Indicator	:4!c//4!c	DVCA	:CAEV//DVCA
		CAMV	M		Mandatory/Voluntary		MAND	:CAMV//MAND
5	98A	PREP	O	Date/Time	Preparation Date	:4!c//8!n		PREP//20051014
	98C					:4!c//8!n6!n		PREP//20051014191603
6	25D	PROC	M	Status Code	Processing Status	:4!c//4!c	ENTL COMP	:PROC//ENTL
Repetitive Optional Subsequence A1 Linkages								
7	16R	LINK	M		Start of Block	LINK		LINK
9	13A	LINK	O	Number Identification	Linked Message	:4!c//3!c		:LINK//564
10	20C	PREV	M	Reference	Previous Reference	:4!c//16x		:PREV//1234567
11	16S	LINK	M		End of Block	LINK		LINK

End of Subsequence A1 Linkages								
12	16S	GENL	M		End of Block	GENL		GENL
End of Sequence A General Information								
Mandatory Sequence B Underlying Securities								
13	16R	USECU	M		Start of Block	USECU		USECU
14	35B		M		Identification of Financial Instrument	[ISIN1!e12!c] [4*35x]		ISIN PLBSK0000017 ING BSK
Repetitive Mandatory Subsequence B2 Account Information								
24	16R	ACCTINFO	M		Start of Block	ACCTINFO		ACCTINFO
26	97A	SAFE	M	Account	Safekeeping Account	:4!c//35x		:SAFE//123456
27	94F	SAFE	O	Place	Place of Safekeeping	:4!c//4!c/4!a2!a2!c[3!c] (Qualifier) (Place) (BIC/BEI)	CUST ICSD NCSD SHHE	:SAFE//CUST/BANKPLP X
28	93B	ELIG	O	Balance	Total Eligible for CA	:4!c//4!c/[N]15d	UNIT	:ELIG//UNIT/20890,
		SETT	M		Settlement Position			
29	16S	ACCTINFO	M		End of Block	ACCTINFO		ACCTINFO
End of Subsequence B2 Account Information								
30	16S	USECU	M		End of Block	USECU		USECU
End of Sequence B Underlying Securities								
Optional Sequence D Corporate Action Details								
41	16R	CADETL	M		Start of Block	CADETL		CADETL
42	98A	ANOU	O	Date/Time	Announcement Date	:4!c//8!n		:ANOU//20050930
		XDTE	O		Ex-Dividend or Distribution Date			:XDTE//20051012
		RDTE	M		Record Date			:RDTE//20051014
50	22F	DIVI	O	Indicator	Dividend Type	:4!c//4!c	FINL INTE REGR SPEC	
53	16S	CADETL	M		End of Block	CADETL		CADETL
End of Sequence D Corporate Action Details								
Repetitive Optional Sequence E Corporate Action Options								
54	16R	CAOPTN	M		Start of Block	CAOPTN		CAOPTN
55	13A	CAON	M	Number Identification	CA Option Number	:4!c//3!c		:CAON//001
56	22F	CAOP	M	Indicator	Corporate Action Option Code	:4!c//4!c	CASH	:CAOP//CASH
57	11A	OPTN	O	Currency	Currency Option	:4!c//3!a		:OPTN//PLN
58	17B	DFLT	M	Flag	Default Processing Flag	:4!c//1!a	DFLT	:DFLT//Y
62	92F	GRSS	M	Rate	Gross Dividend Rate	:4!c//3!a15d (Qualifier) (Currency Code) (Amount)		:GRSS//PLN8,
		TAXR	O		Withholding Tax Rate		:TAXR//15	
	92A	WITF	O		Withholding of Foreign Tax	:4!c//[N]15d (Qualifier) (Sign) (Rate)		
		WITL	O		Withholding of Local Tax			
Repetitive Optional Subsequence E2 Cash Movements								
85	16R	CASHMOVE	M		Start of Block	CASHMOVE		CASHMOVE
86	22H	CRDB	M	Indicator	Indicator	:4!c//4!c	CRED	:CRDB//CRED

87	97A	CASH	O	Account	Cash Account	:4!c//35x		:CASH//123456
88	19B	ENTL	O	Amount	Entitled Amount	:4!c//3!a15d		:ENTL//PLN10445,
		GRSS	O		Gross Amount		:GRSS//PLN10445,	
		NETT	O		Net Cash Amount		:NETT//PLN8879,	
		TAXR	O		Withholding Tax Amount		:TAXR//1566	
		WITF	O		Withholding of Foreign Tax			
		WITL	O		Withholding of Local Tax			
89	98A	PAYD	M	Date/Time	Payment Date	:4!c//8!n		:PAYD//20051011
		VALU	O		Value Date		:VALU//20051012	
92	16S	CASHMOVE	M		End of Block	CASHMOVE		CASHMOVE
End of Subsequence E2 Cash Movements								
94	16S	CAOPTN	M		End of Block	CAOPTN		CAOPTN
End of Sequence E Corporate Action Options								

3. MT 566 - Confirmation

Cash Dividend								
MT 566 Confirmation								
Nr	TAG	Qualifier(s) Supported	Tag Status	Generic Field Name	Detailed Field Name	Content / Options	Explanation / Comments	Example
			NMPG PL					
Mandatory Sequence A General Information								
1	16R	GENL	M		Start of Block	GENL		GENL
2	20C	CORP	M	Reference	Corporate Action Reference	:4!c//16x		:CORP//12345
		SEME	M	Reference	Sender's Reference	:4!c//16x		:SEME//12345678
3	23G	NEWM	M		Function of the Message	:4!c		:NEWM
		REVR						
4	22F	CAEV	M	Indicator	CA Event Indicator	:4!c//4!c	DVCA	:CAEV//DVCA
5	98A	PREP	O	Date/Time	Preparation Date	:4!c//8!n		:PREP//20051031
	98C					:4!c//8!n6!n		:PREP//20051031095716
Repetitive Optional Subsequence A1 Linkages								
6	16R	LINK	M		Start of Block	LINK		LINK
8	13A	LINK	O	Number Identification	Linked Message	:4!c//3!c		:LINK//564
9	20C	PREV	M	Reference	Previous Message Reference	:4!c//16x		:PREV//1234561
10	16S	LINK	M		End of Block	LINK		LINK
End of Subsequence A1 Linkages								
11	16S	GENL	M		End of Block	GENL		GENL
End of Sequence A General Information								
Mandatory Sequence B Underlying Securities								
12	16R	USECU	M		Start of Block	USECU		USECU
14	97A	SAFE	M	Account	Safekeeping Account	:4!c//35x		:SAFE//123456

15	94F	SAFE	O	Place	Place of Safekeeping	:4!c//4!c/4!a2!a2!c[3!c] (Qualifier) (Place) (BIC/BEI)	CUST ICSD NCSD SHHE	:SAFE//CUST/BANKPLPX
16	35B		M		Identification of Financial Instrument	[ISIN]1!e12!c [4*35x]		ISIN PLBSK0000017 ING BSK
26	93B	ELIG	O	Balance	Total Eligible for CA	:4!c//4!c/[N]15d (Qualifier) (Data Source Scheme) (Quantity Type Code) (Sign) (Balance)	UNIT	:ELIG//UNIT/20890,
		CONB	O		Confirmed Balance			:CONB//UNIT/20890,
27	16S	USECU	M		End of Block	USECU		USECU
End of Sequence B Underlying Securities								
Optional Sequence C Corporate Action Details								
28	16R	CADETL	M		Start of Block	CADETL		CADETL
29	98A	ANOU	O	Date/Time	Announcement Date	:4!c//8!n		:ANOU//20050930
		XDTE	O		Ex-Dividend or Distribution Date		:XDTE//20051012	
		PAYD	O		Payment Date		:PAYD//20051031	
		RDTE	M		Record Date		:RDTE//20051014	
38	16S	CADETL	M		End of Block	CADETL		CADETL
End of Sequence C Corporate Action Details								
Mandatory Sequence D Corporate Action Confirmation								
39	16R	CACONF	M		Start of Block	CACONF		CACONF
40	13A	CAON	M	Number Identification	CA Option Number	:4!c//3!c		:CAON//001
41	22F	CAOP	M	Indicator	Indicator	:4!c//4!c	CASH	:CAOP//CASH
42	11A	OPTN	O	Currency	Currency Option	:4!c//3!a		:OPTN//PLN
45	92F	GRSS	O	Rate	Gross Dividend Rate	:4!c//3!a15d (Qualifier) (Currency Code) (Amount)		
	92A	TAXR	O		Withholding Tax Rate	:4!c//[N]15d (Qualifier) (Sign) (Rate)		:TAXR//15
		WITF	O		Withholding of Foreign Tax			
		WITL	O		Withholding of Local Tax			
Repetitive Optional Subsequence D2 Cash Movements								
75	16R	CASHMOVE	M		Start of Block	CASHMOVE		CASHMOVE
76	22H	CRDB/CRED	M	Indicator	Credit/Debit Indicator	:4!c//4!c		:CRDB//CRED
77	97A	CASH	O	Account	Cash Account	:4!c//35x		:CASH//123456
84	19B	PSTA	M	Amount	Posting Amount	:4!c//3!a15d		:PSTA//PLN8879,
		GRSS	O		Gross Amount		:GRSS//PLN10445,	
		NETT	O		Net Cash Amount		:NETT//PLN8879,	
		TAXR	O		Withholding Tax Amount			
		WITF	O		Withholding of Foreign Tax			
		WITL	O		Withholding of Local Tax			:WITL//PLN1566,

85	98A	POST	M	Date/Time	Posting Date	:4!c//8!n		:POST//20051031
		VALU	O		Value Date			:VALU//20051031
92	16S	CASHMOVE	M		End of Block	CASHMOVE		CASHMOVE
End of Subsequence D2 Cash Movements								
93	16S	CACONF	M		End of Block	CACONF		CACONF
End of Sequence D Corporate Action Confirmation								

C. Interest payment

Interest payment rules:

1. Interest payment announcement , if provided, should be sent at the latest 3 days before the record date.
2. The amount of interest payment may be given in a currency or as a percentage value, according to SLA.
3. In the case of complete messages, all fields specified by the Group as mandatory must be filled out.

1. MT 564 – Announcement

Interest Payment								
MT 564 Notification - complete								
Nr	TAG	Qualifier(s) Supported	Tag Status NMPG PL	Generic Field Name	Detailed Field Name	Content / Options	Explanation / Comments	Example
Mandatory Sequence A General Information								
1	16R	GENL	M		Start of Block	GENL		GENL
	20C	CORP	M	Refrence	Corporate Action Reference	:4!c//16x		:CORP//99999
		SEME	M	Refrence	Sender's Reference	:4!c//16x		:SEME//9999910
3	23G	NEWM	M		Function of the Message	:4!c		:NEWM
		CANC						
		REPL						
		WITH						
4	22F	CAEV	M	Indicator	CA Event Indicator	:4!c//4!c	INTR	:CAEV//INTR
		CAMV	M		Mandatory/Voluntary		MAND	:CAMV//MAND
5	98A 98C	PREP	O	Date/Time	Preparation Date	:4!c//8!n :4!c//8!n6!n		:PREP//20051003 :PREP//20051003191708
6	25D	PROC	M	Status Code	Processing Status	:4!c//4!c	COMP	:PROC//COMP
Repetitive Optional Subsequence A1 Linkages								
7	16R	LINK	M		Start of Block	LINK		LINK
9	13A	LINK	O	Number Identification	Linked Message	:4!c//3!c		:LINK//564
10	20C	PREV	M	Reference	Previous Reference	:4!c//16x		:PREV//999991
11	16S	LINK	M		End of Block	LINK		LINK
End of Subsequence A1 Linkages								
12	16S	GENL	M		End of Block	GENL		GENL
End of Sequence A General Information								
Mandatory Sequence B Underlying Securities								
13	16R	USECU	M		Start of Block	USECU		USECU
14	35B		M		Identification of Financial Instrument	[ISIN!e12!c] [4*35x]		ISIN PL0000101887 PS1005 - 5-YR T- BONDS
Repetitive Mandatory Subsequence B2 Account Information								
24	16R	ACCTINFO	M		Start of Block	ACCTINFO		ACCTINFO

26	97A 97C	SAFE	M	Account	Safekeeping Account	:4!c//35x :4!c//4!c		:SAFE//123456 :SAFE//GENR
27	94F	SAFE	O	Place	Place of Safekeeping	:4!c//4!c/4!a2!a2!c [3!c] (Qualifier) (Place) (BIC/BEI)	CUST ICSD NCSD SHHE	:SAFE//CUST/BANKPLP X
28	93B	ELIG SETT	O O	Balance	Total Eligible for CA Settlement Position	:4!c//4!c/[N]15d	FAMT UNIT	:ELIG//UNIT/20890,
29	16S	ACCTINFO	M		End of Block	ACCTINFO		ACCTINFO
End of Subsequence B2 Account Information								
30	16S	USECU	M		End of Block	USECU		USECU
End of Sequence B Underlying Securities								
Optional Sequence D Corporate Action Details								
41	16R	CADETL	M		Start of Block	CADETL		CADETL
42	98A	XDTE	O	Date/Time	Ex-Dividend or Distribution Date			:XDTE//20050930
		RDTE	M		Record Date		:RDTE//20051003	
43	69A	INPE	O	Period	Interest Period	:4!c//8!n/8!n (Qualifier) (Date) (Date)		:INPE//20050630/20050 929
53	16S	CADETL	M		End of Block	CADETL		CADETL
End of Sequence D Corporate Action Details								
Repetitive Optional Sequence E Corporate Action Options								
54	16R	CAOPTN	M		Start of Block	CAOPTN		CAOPTN
55	13A	CAON	M	Number Identification	CA Option Number	:4!c//3!c		:CAON//001
56	22F	CAOP	M	Indicator	Corporate Action Option Code	:4!c//4!c	CASH	:CAOP//CASH
57	11A	OPTN	O	Currency	Currency Option	:4!c//3!a		:OPTN//PLN
58	17B	DFLT	M	Flag	Default Processing Flag	:4!c//1!a	DFLT	:DFLT//Y
60	98A	PAYD	M	Date/Time	Payment Date			:PAYD//20051012
		EARL	O		Earliest Payment Date	:4!c//8!n		
62	lub 92A 92F	INTR	O	Rate	Interest Rate			
		INTP	M		Interest Rate Used for Payment	:4!c//[N]15d (Qualifier) (Sign) (Rate)		:INTP//PLN85,
		TAXR	O		Withholding Tax Rate	lub :4!c//3!a15d (Qualifier) (Currency Code)		:TAXR//20
		WITF	O		Withholding of Foreign Tax	(Amount)		
		WITL	O		Withholding of Local Tax			
94	16S	CAOPTN	M		End of Block	CAOPTN		CAOPTN
End of Sequence E Corporate Action Options								

2. MT564 - Entitlement

Interest Payment								
MT 564 Notification of Entitlement								
Nr	TAG	Qualifier(s) Supported	Tag Status NMPG PL	Generic Field Name	Detailed Field Name	Content / Options	Explanation / Comments	Example
Mandatory Sequence A General Information								
1	16R	GENL	M		Start of Block	GENL		GENL
	20C	CORP	M	Refrence	Corporate Action Reference	:4!c//16x		:CORP//99999
		SEME	M	Refrence	Sender's Reference	:4!c//16x		:SEME//9999910

3	23G	NEWM	M		Function of the Message	:4!c		:NEWM
		CANC						
		REPL						
		REPE WITH						
4	22F	CAEV	M	Indicator	CA Event Indicator	:4!c//4!c	INTR	:CAEV//INTR
		CAMV	M		Mandatory/Voluntary			MAND
5	98A	PREP	O	Date/Time	Preparation Date	:4!c//8!n		:PREP//20051003
	98C				:4!c//8!n6!n	:PREP//20051003191708		
6	25D		M	Status Code	Processing Status	:4!c//4!c	ENTL COMP	:PROC//ENTL
Repetitive Optional Subsequence A1 Linkages								
7	16R	LINK	M		Start of Block	LINK		LINK
9	13A	LINK	O	Number Identification	Linked Message	:4!c//3!c		:LINK//564
10	20C	PREV	M	Reference	Previous Reference	:4!c//16x		:PREV//999991
11	16S	LINK	M		End of Block	LINK		LINK
End of Subsequence A1 Linkages								
12	16S	GENL	M		End of Block	GENL		GENL
End of Sequence A General Information								
Mandatory Sequence B Underlying Securities								
13	16R	USECU	M		Start of Block	USECU		USECU
14	35B		M		Identification of Financial Instrument	[ISIN1!e12!c] [4*35x]		ISIN PLO000101887 PS1005 - 5-YR T-BONDS
Repetitive Mandatory Subsequence B2 Account Information								
24	16R	ACCTINFO	M		Start of Block	ACCTINFO		ACCTINFO
26	97A	SAFE	M	Account	Safekeeping Account	:4!c//35x		:SAFE//123456
27	94F	SAFE	O	Place	Place of Safekeeping (Qualifier) (Place) (BIC/BEI)	:4!c//4!c/4!a2!a2!c3!c	CUST ICSD NCSD SHHE	:SAFE//CUST/BANKPLP X
28	93B	ELIG	O	Balance	Total Eligible for CA	:4!c//4!c/[N]15d	FAMT UNIT	:ELIG//FAMT/150,
		SETT	M		Settlement Position			
29	16S	ACCTINFO	M		End of Block	ACCTINFO		ACCTINFO
End of Subsequence B2 Account Information								
30	16S	USECU	M		End of Block	USECU		USECU
End of Sequence B Underlying Securities								
Optional Sequence D Corporate Action Details								
41	16R	CADETL	M		Start of Block	CADETL		CADETL
42	98A	XDTE	O	Date/Time	Ex-Dividend or Distribution Date	:4!c//8!n		:XDTE//20050930
		RDTE	M		Record Date			:RDTE//20051003
43	69A	INPE	O	Period	Interest Period (Qualifier) (Date) (Date)	:4!c//8!n/8!n		:INPE//20050630/20050929
53	16S	CADETL	M		End of Block	CADETL		CADETL
End of Sequence D Corporate Action Details								
Repetitive Optional Sequence E Corporate Action Options								
54	16R	CAOPTN	M		Start of Block	CAOPTN		CAOPTN
55	13A	CAON	M	Number Identification	CA Option Number	:4!c//3!c		:CAON//001
56	22F	CAOP	M	Indicator	Corporate Action Option Code	:4!c//4!c	CASH	:CAOP//CASH
57	11A	OPTN	O	Currency	Currency	:4!c//3!a		:OPTN//PLN

					Option			
58	17B	DFLT	M	Flag	Default Processing Flag	:4!c//1!a	DFLT	:DFLT//Y
62	lub	INTR	O	Rate	Interest Rate	:4!c//[N]15d (Qualifier) (Sign) (Rate) lub :4!c//3!a15d (Qualifier) (Currency Code) (Amount)		
		INTP	M				:INTP//PLN85,	
		TAXR	O				:TAXR//20	
		WITF	O					
		WITL	O					
Repetitive Optional Subsequence E2 Cash Movements								
85	16R	CASHMOVE	M		Start of Block	CASHMOVE		CASHMOVE
86	22H	CRDB	M	Indicator	Indicator	:4!c//4!c	CRED	:CRDB//CRED
87	97A	CASH	O	Account	Cash Account	:4!c//35x		:CASH//123456
88	19B	ENTL	O	Amount	Entitled Amount	:4!c//3!a15d		:ENTL//PLN10838,
		GRSS	O		Gross Amount		:GRSS//PLN10445,	
		NETT	O		Net Cash Amount		:NETT//PLN8879,	
		TAXR	O		Withholding Tax Amount		:TAXR//1566	
		WITF	O		Withholding of Foreign Tax			
		WITL	O		Withholding of Local Tax			
89	98A	PAYD	M	Date/Time	Payment Date	:4!c//8!n		:PAYD//20051012
		VALU	O		Value Date		:VALU//20051013	
92	16S	CASHMOVE	M		End of Block	CASHMOVE		CASHMOVE
End of Subsequence E2 Cash Movements								
94	16S	CAOPTN	M		End of Block	CAOPTN		CAOPTN
End of Sequence E Corporate Action Options								

3. MT 566 - Confirmation

Interest Payment								
MT 566 Confirmation								
Nr	TAG	Qualifier(s) Supported	Tag Status	Generic Field Name	Detailed Field Name	Content / Options	Explanation / Comments	Example
			NMPG PL					
Mandatory Sequence A General Information								
1	16R	GENL	M		Start of Block	GENL		GENL
2	20C	CORP	M	Reference	Corporate Action Reference	:4!c//16x		:CORP//99999
		SEME	M	Reference	Sender's Reference	:4!c//16x		:SEME//9999920
3	23G	NEWM	M		Function of the Message	:4!c		:NEWM
		REVR						
4	22F	CAEV	M	Indicator	CA Event Indicator	:4!c//4!c	INTR	:CAEV//INTR
5	98A	PREP	O	Date/Time	Preparation Date	:4!c//8!n		:PREP//20051012
	98C					:4!c//8!n6!n		:PREP//20051012083040

Repetitive Optional Subsequence A1 Linkages								
6	16R	LINK	M		Start of Block	LINK		LINK
8	13A	LINK	O	Number Identification	Linked Message	:4!c//3!c		:LINK//564
9	20C	PREV	M	Reference	Previous Message Reference	:4!c//16x		:PREV//9999911
10	16S	LINK	M		End of Block	LINK		LINK
End of Subsequence A1 Linkages								
11	16S	GENL	M		End of Block	GENL		GENL
End of Sequence A General Information								
Mandatory Sequence B Underlying Securities								
12	16R	USECU	M		Start of Block	USECU		USECU
14	97A	SAFE	M	Account	Safekeeping Account	:4!c//35x		:SAFE//123456
15	94F	SAFE	O	Place	Place of Safekeeping	:4!c//4!c/4!a2!a2!c [3!c] (Qualifier) (Place) (BIC/BEI)	CUST ICSD NCSD SHHE	:SAFE//CUST/BANKPLPX
16	35B		M		Identification of Financial Instrument	[!SIN!e!2!c] [4*35x]		ISIN PL0000101887 PS1005 - 5-YR T- BONDS
26	93B	ELIG	O	Balance	Total Eligible for CA	:4!c//4!c/[N]15d (Qualifier) (Data Source Scheme)	FAMT UNIT	:ELIG//FAMT150,
		CONB	O		Confirmed Balance	(Quantity Type Code) (Sign) (Balance)		:CONB//FAMT/150,
27	16S	USECU	M		End of Block	USECU		USECU
End of Sequence B Underlying Securities								
Optional Sequence C Corporate Action Details								
28	16R	CADETL	M		Start of Block	CADETL		CADETL
29	98A	XDTE	O	Date/Time	Ex-Dividend or Distribution Date	:4!c//8!n		:XDTE//20050930
		PAYD	O		Payment Date		:PAYD//20051012	
		RDTE	M		Record Date		:RDTE//20051003	
30	69A	INPE	O	Period	Interest Period	:4!c//8!n/8!n (Qualifier) (Date) (Date)		:INPE//20050630/20050929
38	16S	CADETL	M		End of Block	CADETL		CADETL
End of Sequence C Corporate Action Details								
Mandatory Sequence D Corporate Action Confirmation								
39	16R	CACONF	M		Start of Block	CACONF		CACONF
40	13A	CAON	M	Number Identification	CA Option Number	:4!c//3!c		:CAON//001
41	22F	CAOP	M	Indicator	Indicator	:4!c//4!c	CASH	:CAOP//CASH
42	11A	OPTN	O	Currency	Currency Option	:4!c//3!a		
45	lub	92A	TAXR	O	Rate	Withholding Tax Rate	:4!c//[N]15d (Qualifier) (Sign) (Rate) lub :4!c//3!a15d (Qualifier) (Currency Code) (Amount)	
		92A	INTR	O		Interest Rate		
		92F	INTP	M		Interest Rate Used for Payment		
		92F	WITF	O		Withholding of Foreign Tax		
		92F	WITL	O		Withholding of Local Tax		
Repetitive Optional Subsequence D2 Cash Movements								
75	16R	CASHMOVE	M		Start of Block	CASHMOVE		CASHMOVE
76	22H	CRDB/CRE D	M	Indicator	Credit/Debit Indicator	:4!c//4!c		:CRDB//CRED

77	97A	CASH	O	Account	Cash Account	:4!c//35x		:CASH//123456
84	19B	PSTA	M	Amount	Posting Amount	:4!c//3!a15d		:PSTA//PLN10838,
		GRSS	O		Gross Amount			
		NETT	O		Net Cash Amount			:NETT//PLN10838,
		TAXR	O		Withholding Tax Amount			
		WITF	O		Withholding of Foreign Tax			
		WITL	O		Withholding of Local Tax			:WITL//PLN1912,
85	98A	POST	M	Date/Time	Posting Date	:4!c//8!n		:POST//20051012
		VALU	O		Value Date			:VALU//20051012
92	16S	CASHMOVE	M		End of Block	CASHMOVE		CASHMOVE
End of Subsequence D2 Cash Movements								
93	16S	CACONF	M		End of Block	CACONF		CACONF
End of Sequence D Corporate Action Confirmation								

D. Redemption of bonds at maturity

Redemption rules:

1. Bond redemption announcement should be sent at the latest 3 days before the record date.
2. An interest payment and a principal payment on bonds are treated as two separate corporate events.
3. In the case of complete messages, all fields specified by the Group as mandatory must be filled out.

1. MT 564 - Announcement

Redemption at Maturity								
MT 564 Notification - complete								
Nr	TAG	Qualifier(s) Supported	Tag Status	Generic Field Name	Detailed Field Name	Content / Options	Explanation / Comments	Example
			NMPG PL					
Mandatory Sequence A General Information								
1	16R	GENL	M		Start of Block	GENL		GENL
	20C	CORP	M	Refrence	Corporate Action Reference	:4!c//16x		:CORP//88888
		SEME	M	Refrence	Sender's Reference	:4!c//16x		:SEME//8888810
3	23G	NEWM CANC REPL WITH	M		Function of the Message	:4!c		:NEWM
4	22F	CAEV	M	Indicator	CA Event Indicator	:4!c//4!c	REDM	:CAEV//REDM
		CAMV	M		Mandatory/Voluntary		MAND	:CAMV//MAND
5	98A	PREP	O	Date/Time	Preparation Date	:4!c//8!n		:PREP//20051003
	98C					:4!c//8!n6!n		:PREP//20051003191712
6	25D	PROC	M	Status Code	Processing Status	:4!c//4!c	COMP	:PROC//COMP
Repetitive Optional Subsequence A1 Linkages								
7	16R		M		Start of Block	LINK		LINK

9	13A	LINK	O	Number Identification	Linked Message	:4!c//3!c		:LINK//564
10	20C	PREV	M	Reference	Previous Reference	:4!c//16x		:PREV//888881
11	16S	LINK	M		End of Block	LINK		LINK
End of Subsequence A1 Linkages								
12	16S	GENL	M		End of Block	GENL		GENL
End of Sequence A General Information								
Mandatory Sequence B Underlying Securities								
13	16R	USECU	M		Start of Block	USECU		USECU
14	35B		M		Identification of Financial Instrument	[ISIN]1!e12!c [4*35x]		ISIN PL0000101887 PS1005 - 5-YR T- BONDS
Repetitive Mandatory Subsequence B2 Account Information								
24	16R	ACCTINFO	M		Start of Block	ACCTINFO		ACCTINFO
26	97A	SAFE	M	Account	Safekeeping Account	:4!c//35x		:SAFE//123456
	97C					:4!c//4!c	GENR	:SAFE//GENR
27	94F	SAFE	O	Place	Place of Safekeeping	:4!c//4!c/4!a2!a2!c3!c (Qualifier) (Place) (BIC/BEI)	CUST ICSD NCSD SHHE	:SAFE//CUST/BANKPLPX
28	93B	ELIG	O	Balance	Total Eligible for CA	:4!c//4!c/[N]15d	FAMT UNIT	:ELIG//UNIT/150,
		SETT	O		Settlement Position			
29	16S	ACCTINFO	M		End of Block	ACCTINFO		ACCTINFO
End of Subsequence B2 Account Information								
30	16S	USECU	M		End of Block	USECU		USECU
End of Sequence B Underlying Securities								
Optional Sequence D Corporate Action Details								
41	16R	CADETL	M		Start of Block	CADETL		CADETL
42	98A	XDTE	O	Date/Time	Ex-Dividend or Distribution Date	:4!c//8!n		
		MATU	M		Maturity Date/Time			:MATU//20051012
		RDTE	O		Record Date			:RDTE//20051003
53	16S	CADETL	M		End of Block	CADETL		CADETL
End of Sequence D Corporate Action Details								
Repetitive Optional Sequence E Corporate Action Options								
54	16R	CAOPTN	M		Start of Block	CAOPTN		CAOPTN
55	13A	CAON	M	Number Identification	CA Option Number	:4!c//3!c		:CAON//001
56	22F	CAOP	M	Indicator	Corporate Action Option Code	:4!c//4!c	CASH	:CAOP//CASH
57	11A	OPTN	O	Currency	Currency Option	:4!c//3!a		:OPTN//PLN
58	17B	DFLT	M	Flag	Default Processing Flag	:4!c//1!a	DFLT	:DFLT//Y
60	98A	PAYD	M	Date/Time	Payment Date	:4!c//8!n		:PAYD//20051012
		EARL	O		Earliest Payment Date			
62	92A	TAXR	O	Rate	Withholding Tax Rate	:4!c//[N]15d (Qualifier) (Sign) (Rate)		:TAXR//20
		WITF	O		Withholding of Foreign Tax			
		WITL	O		Withholding of Local Tax			
63	90A	OFFR	O	Price	Generic Cash Price Received per Product	:4!c//4!c/15d (Qualifier) (Percentage Type Code) (Price)		:OFFR//PRCT/100,

	90B		O			:4!c//4!c/3!a15d (Qualifier) (Amount Type Code) (Currency Code) (Price)		:OFFR//ACTU/PLN1000,
94	16S	CAOPTN	M		End of Block	CAOPTN		CAOPTN
End of Sequence E Corporate Action Options								

2. MT564 - Entitlement

Redemption at Maturity								
MT 564 Notification of Entitlement								
Nr	TAG	Qualifier(s) Supported	Tag Status NMPC PL	Generic Field Name	Detailed Field Name	Content / Options	Explanation / Comments	Example
Mandatory Sequence A General Information								
1	16R	GENL	M		Start of Block	GENL		GENL
	20C	CORP	M	Refrence	Corporate Action Reference	:4!c//16x		:CORP//88888
		SEME	M	Refrence	Sender's Reference	:4!c//16x		:SEME//8888810
3	23G	NEWM	M		Function of the Message	:4!c		:NEWM
		CANC						
		REPL						
		REPE						
		WITH						
4	22F	CAEV	M	Indicator	CA Event Indicator	:4!c//4!c	REDM	:CAEV//REDM
		CAMV	M		Mandatory/ Voluntary		MAND	:CAMV//MAND
5	98A 98C	PREP	O	Date/Time	Preparation Date	:4!c//8!n :4!c//8!n6!n		:PREP//20051003 :PREP//20051003191712
6	25D	PROC	M	Status Code	Processing Status	:4!c//4!c	ENTL COMP	:PROC//ENTL
Repetitive Optional Subsequence A1 Linkages								
7	16R	LINK	M		Start of Block	LINK		LINK
9	13A	LINK	O	Number Identification	Linked Message	:4!c//3!c		:LINK//564
10	20C	PREV	M	Reference	Previous Reference	:4!c//16x		:PREV//888881
11	16S	LINK	M		End of Block	LINK		LINK
End of Subsequence A1 Linkages								
12	16S	GENL	M		End of Block	GENL		GENL
End of Sequence A General Information								
Mandatory Sequence B Underlying Securities								
13	16R	USECU	M		Start of Block	USECU		USECU
14	35B		M		Identification of Financial Instrument	[!SIN1!e12!c] [4*35x]		ISIN PL0000101887 PS1005 - 5-YR T- BONDS
Repetitive Mandatory Subsequence B2 Account Information								
24	16R	ACCTINFO	M		Start of Block	ACCTINFO		ACCTINFO
26	97A	SAFE	M	Account	Safekeeping Account	:4!c//35x		:SAFE//123456
27	94F	SAFE	O	Place	Place of Safekeeping	:4!c//4!c/4!a2!a2!c[3!c] (Qualifier) (Place) (BIC/BEI)	CUST ICSD NCSD SHHE	:SAFE//CUST/BANKPLP X

28	93B	ELIG	O	Balance	Total Eligible for CA	:4!c//4!c/[N]15d	FAMT UNIT	:ELIG//UNIT/150,
		SETT	M		Settlement Position			
29	16S	ACCTINFO	M		End of Block	ACCTINFO		ACCTINFO
End of Subsequence B2 Account Information								
30	16S	USECU	M		End of Block	USECU		USECU
End of Sequence B Underlying Securities								
Optional Sequence D Corporate Action Details								
41	16R	CADETL	M		Start of Block	CADETL		CADETL
42	98A	XDTE	O	Date/Time	Ex-Dividend or Distribution Date			:XDTE//20050930
		MATU			Maturity Date/Time			:MATU//20051012
		RDTE	O		Record Date			:RDTE//20051003
53	16S	CADETL	M		End of Block	CADETL		CADETL
End of Sequence D Corporate Action Details								
Repetitive Optional Sequence E Corporate Action Options								
54	16R	CAOPTN	M		Start of Block	CAOPTN		CAOPTN
55	13A	CAON	M	Number Identification	CA Option Number	:4!c//3!c		:CAON//001
56	22F	CAOP	M	Indicator	Corporate Action Option Code	:4!c//4!c	CASH	:CAOP//CASH
57	11A	OPTN	O	Currency	Currency Option	:4!c//3!a		:OPTN//PLN
58	17B	DFLT	M	Flag	Default Processing Flag	:4!c//1!a		:DFLT//Y
62	92A	TAXR	O	Rate	Withholding Tax Rate	:4!c//[N]15d (Qualifier) (Sign) (Rate)		:TAXR//20
		WITF	O		Withholding of Foreign Tax			
		WITL	O		Withholding of Local Tax			
63	90A		O	Price	Generic Cash Price Received per Product	:4!c//4!c/15d (Qualifier) (Percentage Type Code) (Price) :4!c//4!c/3!a15d (Qualifier) (Amount Type Code) (Currency Code) (Price)		:OFFR//PRCT/100,
	90B	OFFR	O					:OFFR//ACTU/PLN1000,
Repetitive Optional Subsequence E1 Securities Movement								
65	16R	SECMOVE	M		Start of Block	SECMOVE		SECMOVE
66	22H	CRDB	M	Indicator	Indicator	:4!c//4!c	DEBT	:CRDB/DEBT
67	35B		M	Indicator	Identification of Financial Instrument	[ISIN1!e12!c] [4*35x]		ISIN PL0000101887 PST1005 - 5-YR T- BONDS
77	36B	ENTL	O	Quantity of Financial Instrument	Entitled Quantity	:4!c//4!c/15d	FAMT UNIT	:ENTL//UNIT/150,
83	98A	PAYD	M	Date/Time	Payment Date	:4!c//8!n		:PAYD//20051012
84	16S	SECMOVE	M		End of Block	SECMOVE		SECMOVE
End of Subsequence E1 Securities Movement								
Repetitive Optional Subsequence E2 Cash Movements								

85	16R	CASHMOVE	M		Start of Block	CASHMOVE		CASHMOVE
86	22H	CRDB	M	Indicator	Indicator	:4!c//4!c	CRED	:CRDB//CRED
87	97A	CASH	O	Account	Cash Account	:4!c//35x		:CASH//123456
88	19B	ENTL	O	Amount	Entitled Amount	:4!c//3!a15d		:ENTL//PLN150000,
		GRSS	O		Gross Amount			
		NETT	O		Net Cash Amount			
		TAXR	O		Withholding Tax Amount			
		WITF	O		Withholding of Foreign Tax			
		WITL	O		Withholding of Local Tax			
89	98A	PAYD	M	Date/Time	Payment Date	:4!c//8!n		:PAYD//20051012
		VALU	O		Value Date			:VALU//20051013
92	16S	CASHMOVE	M		End of Block	CASHMOVE		CASHMOVE
End of Subsequence E2 Cash Movements								
94	16S	CAOPTN	M		End of Block	CAOPTN		CAOPTN
End of Sequence E Corporate Action Options								

3. MT 566 - Confirmation

Redemption at Maturity								
MT 566 Confirmation								
Nr wg SRG 2007	TAG	Qualifier(s) Supported	Tag Status NMPG PL	Generic Field Name	Detailed Field Name	Content / Options	Explanation / Comments	Example
Mandatory Sequence A General Information								
1	16R	GENL	M		Start of Block	GENL		GENL
2	20C	CORP	M	Reference	Corporate Action Reference	:4!c//16x		:CORP//88888
		SEME	M	Reference	Sender's Reference	:4!c//16x		:SEME//8888820
3	23G	NEWM	M		Function of the Message	:4!c		:NEWM
		REVR						
4	22F	CAEV	M	Indicator	CA Event Indicator	:4!c//4!c	REDM	:CAEV//REDM
5	98A	PREP	O	Date/Time	Preparation Date	:4!c//8!n		:PREP//20051012
	98C				:4!c//8!n6!n		:PREP//20051012083057	
Repetitive Optional Subsequence A1 Linkages								
6	16R	LINK	M		Start of Block	LINK		LINK
8	13A	LINK	O	Number Identification	Linked Message	:4!c//3!c		:LINK//564
9	20C	PREV	M	Reference	Previous Message Reference	:4!c//16x		:PREV//8888812
10	16S	LINK	M		End of Block	LINK		LINK
End of Subsequence A1 Linkages								
11	16S	GENL	M		End of Block	GENL		GENL
End of Sequence A General Information								

Mandatory Sequence B Underlying Securities								
12	16R	USECU	M		Start of Block	USECU		USECU
14	97A	SAFE	M	Account	Safekeeping Account	:4!c//35x		:SAFE//123456
15	94F	SAFE	O	Place	Place of Safekeeping	:4!c//4!c/4!a2!a2!c[3!c] (Qualifier) (Place) (BIC/BEL)	CUST ICSD NCSD SHHE	:SAFE//CUST/BANKPLPX
16	35B		M		Identification of Financial Instrument	[ISIN]1!e12!c [4*35x]		:35B:ISIN PL0000101887 PS1005 - 5-YR T- BONDS
26	93B	ELIG	O	Balance	Total Eligible for CA	:4!c//4!c/[N]15d (Qualifier) (Data Source Scheme) (Quantity Type Code) (Sign) (Balance)	FAMT UNIT	:ELIG//UNIT/150,
		CONB	O		Confirmed Balance			:CONB//UNIT/150,
27	16S	USECU	M		End of Block	USECU		USECU
End of Sequence B Underlying Securities								
Optional Sequence C Corporate Action Details								
28	16R	CADETL	M		Start of Block	CADETL		CADETL
29	98A	XDTE	O	Date/Time	Ex-Dividend or Distribution Date	:4!c//8!n		:XDTE//20050930
		PAYD	O		Payment Date		:PAYD//20051012	
		REDM	M		Redemption Date		:REDM//20051012	
		RDTE	O		Record Date		:RDTE//20051003	
38	16S	CADETL	M		End of Block	CADETL		CADETL
End of Sequence C Corporate Action Details								
Mandatory Sequence D Corporate Action Confirmation								
39	16R	CACONF	M		Start of Block	CACONF		CACONF
40	13A	CAON	M	Number Identification	CA Option Number	:4!c//3!c		:CAON//001
41	22F	CAOP	M	Indicator	Indicator	:4!c//4!c	CASH	:CAOP//CASH
42	11A	OPTN	O	Currency	Currency Option	:4!c//3!a		
45	92A	TAXR	O	Rate	Withholding Tax Rate	:4!c//[N]15d (Qualifier) (Sign) (Rate)		
		WITF	O		Withholding of Foreign Tax			
		WITL	O		Withholding of Local Tax			
46	90A	OFFR	O	Price	Generic Cash Price Received per Product	:4!c//4!c/15d (Qualifier) (Percentage Type Code) (Price)		:OFFR//PRCT/100,
	90B		O			:4!c//4!c/3!a15d (Qualifier) (Amount Type Code) (Currency Code) (Price)		:OFFR//ACTU/PLN1000,
Repetitive Optional Subsequence D1 Securities Movement								
48	16R	SECMOVE	M		Start of Block	SECMOVE		SECMOVE
49	22H	CRDB/DEBT	M	Indicator	Credit/Debit Indicator	:4!c//4!c		:CRDB/DEBT

50	35B		M		Identification of Financial Instrument	[ISIN1!e12!c] [4*35x]		ISIN PL0000101887 PS1005 - 5-YR T- BONDS
60	36B	PSTA	M	Quantity of Financial Instrument	Posting Quantity	:4!c//4!c/15d		:PSTA//UNIT/150,
66	98A	POST	M	Date/Time	Posting Date	:4!c//8!n		:POST//20051012
74	16S	SECMOVE	M		End of Block	SECMOVE		SECMOVE
End of Subsequence D1 Securities Movement								
Repetitive Optional Subsequence D2 Cash Movements								
75	16R	CASHMOVE	M		Start of Block	CASHMOVE		CASHMOVE
76	22H	CRDB/CRED	M	Indicator	Credit/Debit Indicator	:4!c//4!c		:CRDB//CRED
77	97A	CASH	O	Account	Cash Account	:4!c//35x		:CASH//123456
84	19B	PSTA	M	Amount	Posting Amount	:4!c//3!a15d		:PSTA//PLN150000,
		GRSS	O		Gross Amount			
		NETT	O		Net Cash Amount			:NETT//PLN150000,
		TAXR	O		Withholding Tax Amount			
		WITF	O		Withholding of Foreign Tax			
		WITL	O		Withholding of Local Tax			:WITL//PLN0,
85	98A	POST	M	Date/Time	Posting Date	:4!c//8!n		:POST//20051012
		VALU	O		Value Date			:VALU//20051012
92	16S	CASHMOVE	M		End of Block	CASHMOVE		CASHMOVE
End of Subsequence D2 Cash Movements								
93	16S	CACONF	M		End of Block	CACONF		CACONF
End of Sequence D Corporate Action Confirmation								